

# TAFE GIPPSLAND

## Certificate II in Civil Construction RII20715

Campus: Yallourn

Completion: Full	Duration: 2 Years	Scored assessment: No
VET in VCE: Yes	VCAL recognition: Yes	Block credit: Yes
Pre-requisites: Nil	Structured Workplace Learning: Strongly recommended	

This qualification provides students with an overview of working in an operational role in civil construction. Civil construction labourers assist tradespeople on construction sites by performing a wide range of manual labouring tasks such as excavating, taking measurements, reading plans and using tools and equipment. This program also provides a pathway into further training as an apprentice or trainee within the civil construction industry.

### Proposed units

Unit code	Unit name
CPCWHS1001	Prepare to work safely in the construction industry
RIIBEF201D	Plan and organise work
RIICCM201D	Carry out measurements and calculations
RIIWS201D	Work safely and follow WHS policies and procedures
RIICOM201D	Communicate in the workplace
RIISAM204D	Operate small plant and equipment
RIICCM202D	Identify, locate and protect underground services
RIICCM209D	Carry out concrete work
RIICCM203D	Read and interpret plans and job specifications
RIICCM205E	Carry out manual excavation
RIICCM207D	Spread and compact materials manually
RIICCM208D	Carry out basic levelling
RIICCM206D	Support plant operations
RIISAM203D	Use hand and power tools
RIIWS205D	Control traffic with stop-slow bat
RIIWMG203D	Drain and de-water civil constitution site
RIIWS302E	Implement traffic management plan

### Clothing & equipment

Student must supply:

- Safety boots
- Wet weather gear
- Hat (sun protection)

TAFE Gippsland will supply:

- Branded shirt, safety glasses, gloves, sunscreen and ear protection supplied

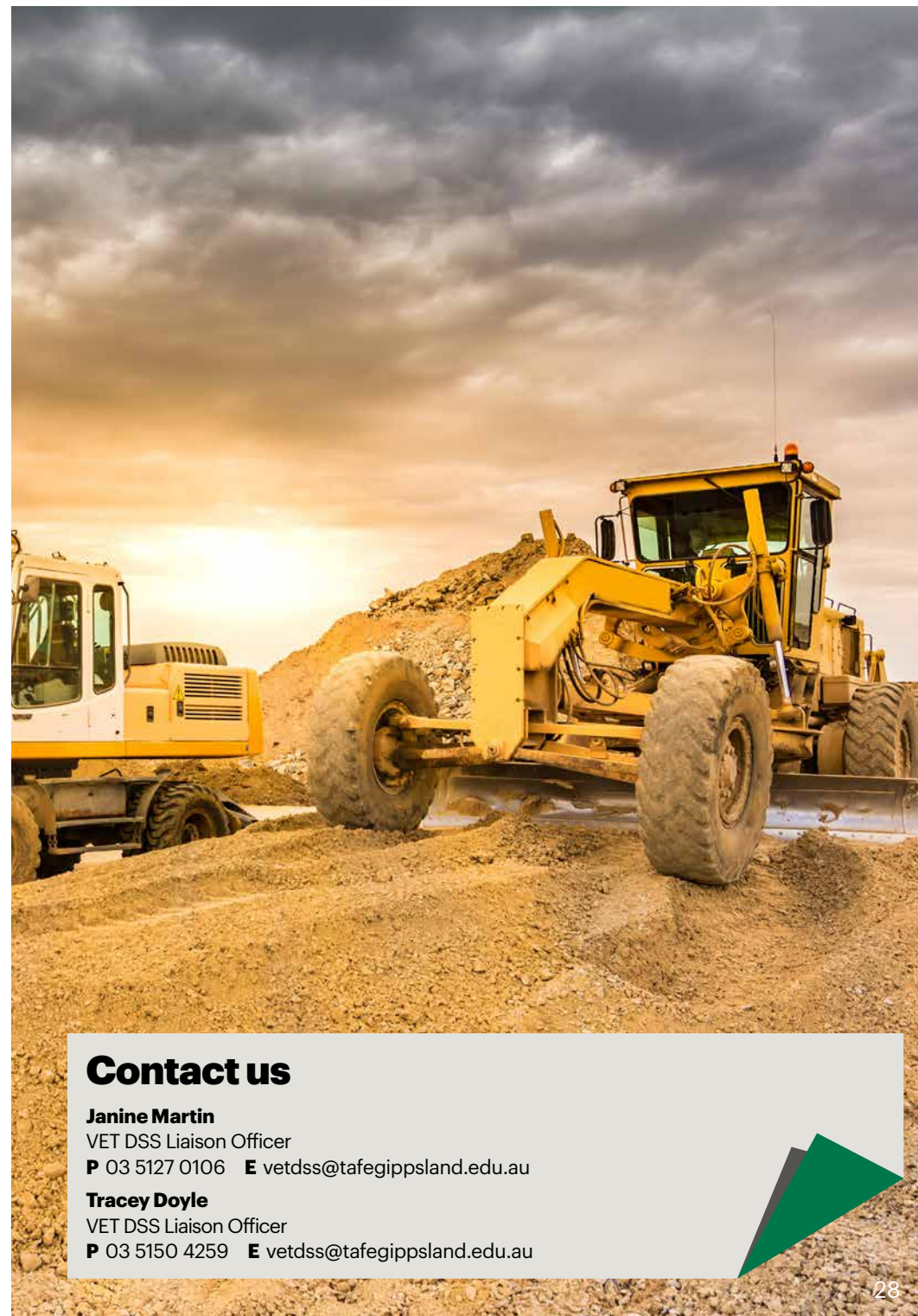
### Education Pathways

Here are the next steps you could take in your education pathway:

- Certificate III in Civil Construction
- Certificate III in Civil Construction Plant Operations
- Certificate IV in Civil Construction

### Potential job outcomes

- Civil plant operator
- Civil engineer



### Contact us

**Janine Martin**

VET DSS Liaison Officer

**P** 03 5127 0106 **E** vetdss@tafegippsland.edu.au

**Tracey Doyle**

VET DSS Liaison Officer

**P** 03 5150 4259 **E** vetdss@tafegippsland.edu.au